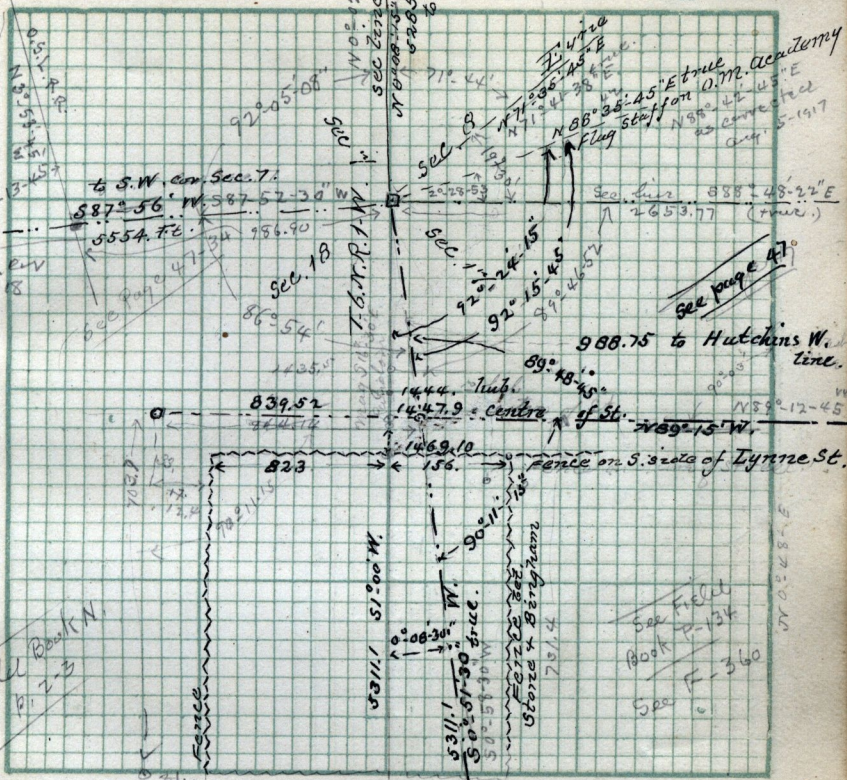


to S.W. cor. Sec. 7.  
to N.W. cor. Sec. 8.



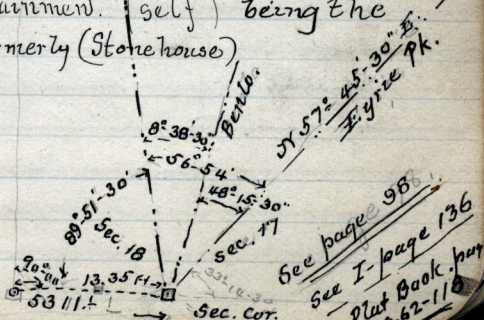
Scale: .....

Chains per inch.

2640.766. Fence on S. side Bingham Cr.

July 11-1891. Survey made for Harry Barrows in Sec's 17-18 T.6.N.R.1.W. John Baird & John Layman Chairmen. (self) being the land owned by N.G. Stone. (formerly (Stonehouse))

T.6.N.R.1.W.  
N 0° 34' 15" E  
true course



843.71